

"some lead, others follow" !

SonarMite PDA **Hydrographic Software for the Windows Mobile PDA**



Typical Windows Mobile PDAs

The SonarMite Echo Sounder is the result of nearly two years research and development to further extend the boundaries of shallow water hydrographic surveying equipment. The introduction by Ohmex in 1997 of the SonarLite, the worlds first truly portable echo sounder system, has been a hard act to follow and it remains the portable instrument of choice in many survey companies around the world. The release of the SonarMite instrument marks the next stage introducing a series of equipment designed around the **WinSTRUMENT** concept using the latest portable computers integrated with new measurement technologies.

SonarMite Main Features



- Bluetooth technology integrated with Windows Pocket PC devices
- Proven 'Smart' transducer design with QA output
- Internal rechargeable battery for all day use in the field
- Easily integrated with other modern software and GPS technology



OHMEX

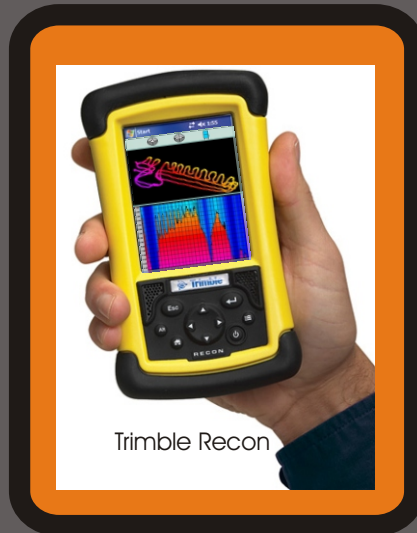
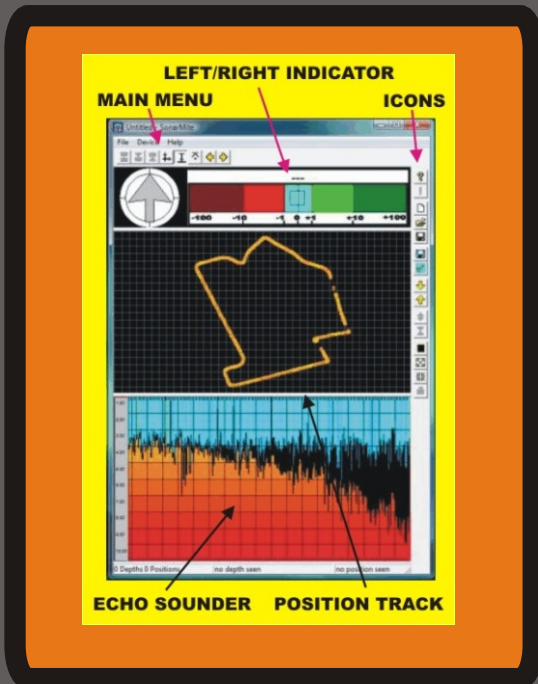
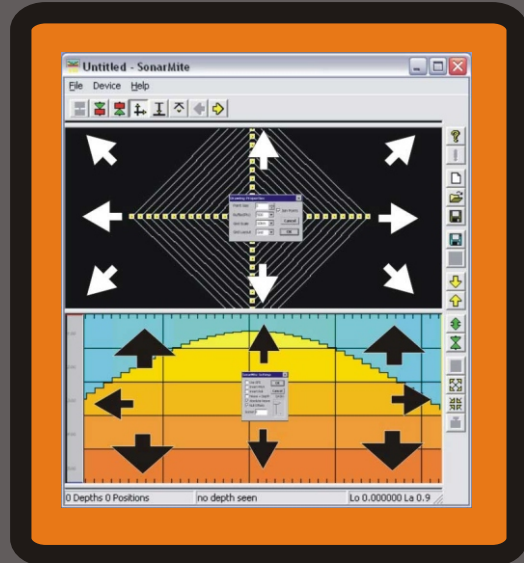
www.tidegauge.com

www.echo-sounder.com

Throughout the Hydrographic world the term 'Black Box' has become a euphemism for a device that has a minimal user interface and normally requires connection to a PC to be of any use !

In most cases these boxes are a cut down version of a more conventional instrument without all the features of the full system. The SonarMite extends this idea of a rugged design and minimalist interface to produce a 'Blue Box' system where the user interface is provided by integrated software running on a portable computer connected via a Bluetooth link. The use of wireless technology enables the instrument to be waterproof and used in a hostile environment while the more sensitive computer features can be located in a more user friendly environment up to 50m away from the instrument.

The SonarMite instrument uses the same 'Smart' integrated transducer technology used in the SonarLite system, in addition to highly reliable bottom tracking algorithms using DSP techniques the system also outputs a quality value associated with every depth measurement made. The popular SonarXP software has been updated to SonarVista, in addition to the standard post-processing and editing features found in the SonarLite software the program now includes extended features to implement the additional measurements produced by the SonarMite. Software for the 'front end' of the SonarMite is available to run on a wide range of devices from Pocket PCs through to the full range of desktop systems running the Windows operating system.



Ohmex is a company formed to manufacture and distribute products designed by Lymtech Ltd. This company established in 1982 was founded on technological innovation and design. The company prides itself on being the first to produce products in the field of instrumentation and software used within the Earth Science sectors. Achievements to date include DGM ,the first digital ground modeling software to run a standard PC, SONARLITE, the first truly portable echo sounder, TIDALITE the first portable Tide Gauge, EDAS, Integrated tide and weather networked software for use by ports and harbours. WinSTRUMENTATION - The integration of Instrumentation, Wireless networks and modern portable computer equipment. SONARMITE the first echo sounder to use Bluetooth communications technology.



 **OHMEX**

www.ohmex.com